

Press Release

First Results of the InRoad Consultation

Berne, 11 July 2017

On 2 May 2017, InRoad successfully [launched](#) its consultation for 5 weeks to collect information about national Research Infrastructure (RI) policies. This included decision-making, funding and business models and their link to roadmapping processes from EU Member States (EU MS) and Associated Countries (AC). The aim of the consultation is a comparative analysis of national RI policies in order to facilitate engagement, mutual learning and improve coordination among policy and decision-makers in Europe, thus contributing to RI long-term sustainability.

InRoad contacted all 46 MSs and ACs. In total, 79% of all MSs and 28% of all ACs responded. Moreover, 96% of European States with a RI Roadmap and 40% of European States planning a RI Roadmap participated in the consultation, according to information from InRoad consultation and desk study as well as the ESFRI website.

In June, the partners analysed and discussed the first results of the consultation at the consortium meeting in Coimbra, Portugal. The preliminary analysis show the following interesting results:

- 93% of the respondents have a national decision-making process in place for priority setting and/or funding of RIs in place and 85% have a national RI roadmap in place.
- The top three purposes for national road maps are (1) having input for funding decision on RIs between stakeholders, (2) listing strategic priorities for foreseen funding and (3) identifying scientific needs and existing gaps.
- 61% of the respondents have RI evaluation procedures and 57% of the respondents have RI monitoring procedures in place.
- The three most relevant topics for countries with a national RI roadmap in place to learn more are (1) strategic decision-making, (2) evaluation procedures and (3) life cycle management. For countries without a national RI roadmap, the most relevant topics are similar, though these countries are more interested in learning how to conduct a landscape analysis instead of life cycle management.
- While countries with a national RI roadmap in place are the most interested in learning about strategic decision making from others, the biggest interest to collaborate with others lies in monitoring and evaluation procedures.
- Countries planning a national RI roadmap on the other hand are mostly interested in learning and collaborating more regarding evaluation procedures, as well as in collaborating more with respect to the life-cycle management of RIs.
- The questions on interest in learning and collaborating more shows a large potential for countries less experienced in RI road mapping to learn from their more experienced peers. This is also precisely where the InRoad project wants to offer its assistance.

Until the beginning of September, InRoad will analyse the results more in depth. The detailed results will serve as a basis for the regional workshops in October and November as well as the Compendium of the first National Research Infrastructure Road Mapping Procedures (NRIRMP) analysis at the end of November.

More information

The detailed preliminary results can be found in the annex of this press release. Please visit our [website](#) or like us on [Facebook](#), follow us on [Twitter](#) or on [Linkedin](#) for more up-to-date information.

Contact

For questions or requests, please contact info@inroad.eu

ANNEX: Overview of Preliminary Results of the InRoad Consultation

The preliminary results are structured as follows:

1. Participatory countries in the InRoad Consultation
2. Countries with a national RI roadmap in place
3. Purpose of the RI roadmaps
4. RI evaluation and monitoring mechanisms in place
5. Topics of interest for learning
6. Topics of interest for collaboration

1. Participatory countries in the InRoad consultation

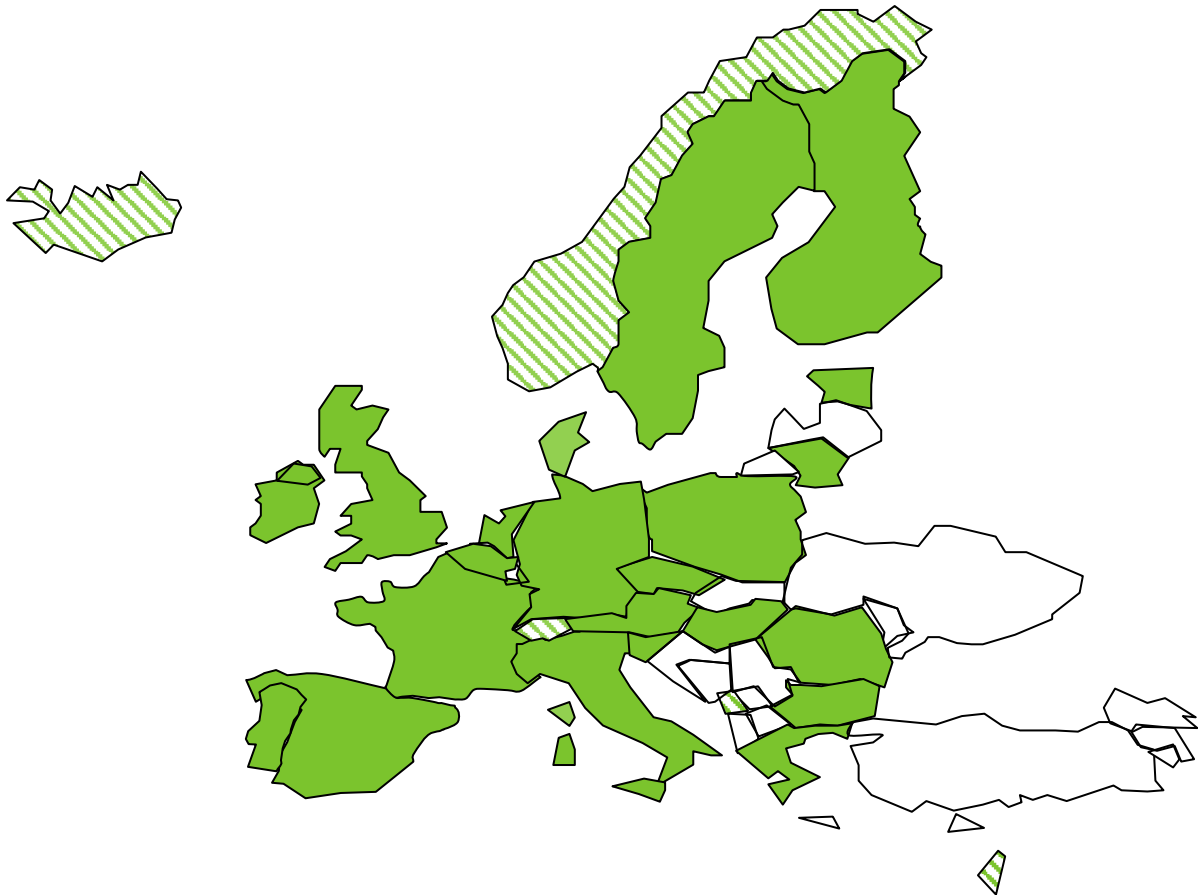


Figure 1: Participatory countries in the InRoad consultation

- **Participants from EU Member States (green):** Austria, Belgium, Bulgaria, Czech Republic, Denmark, Estonia, Finland, France, Germany, Greece, Hungary, Ireland, Italy, Lithuania, Netherlands, Poland, Portugal, Romania, Slovenia, Spain, Sweden, United Kingdom
- **Participants from Associated Countries (green hatching):** Iceland, Israel, Montenegro, Norway, Switzerland
- **100% of the respondents already had exchanges of information** with other countries for learning about decision-making on RIs.

2. Countries with a national RI roadmap in place

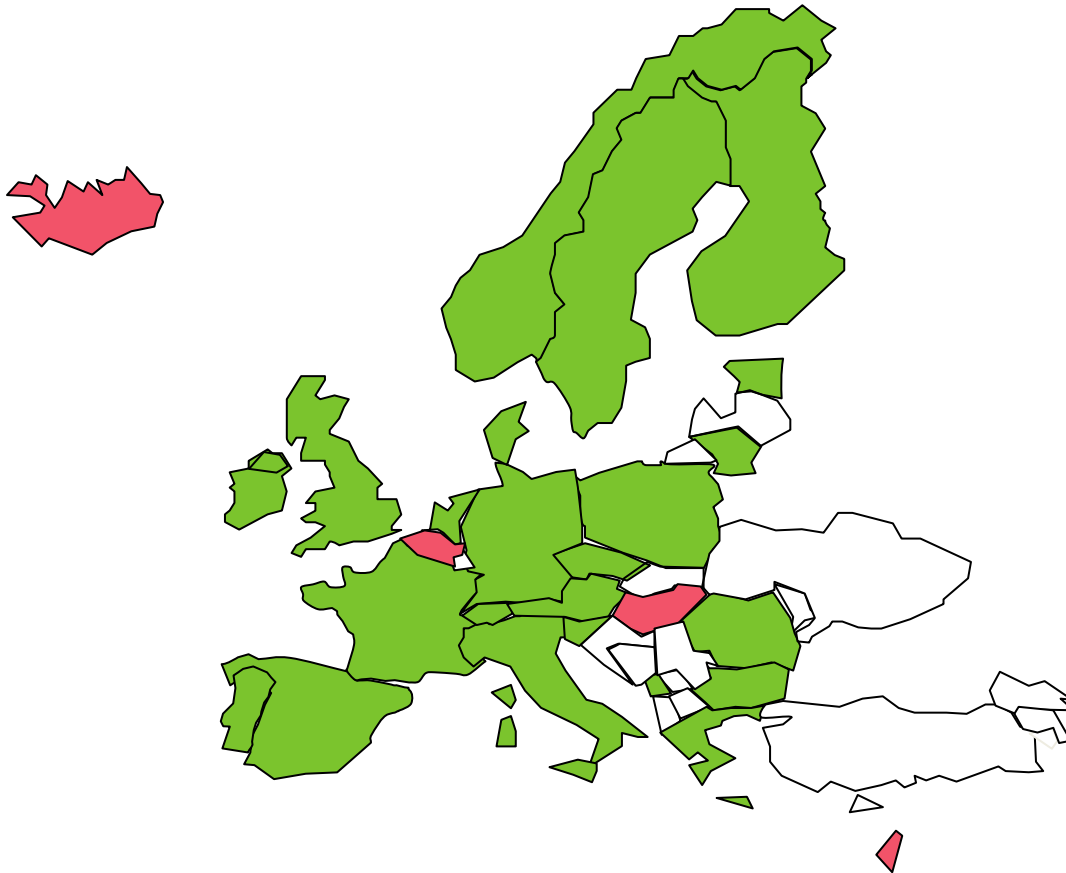


Figure 2: Overview of countries with and without national RI roadmap

- **93% of the respondents have a national decision-making process** in place for priority setting and/or funding of RIs in place and **85% have a national RI roadmap in place.**
- **Countries with a national RI roadmap (green):** Austria, Bulgaria, Czech Republic, Denmark, Estonia, Finland, France, Germany, Greece, Ireland, Italy, Lithuania, Montenegro, Netherlands, Norway, Poland, Portugal, Romania, Slovenia, Spain, Sweden, Switzerland, United Kingdom
- **Countries currently planning a national RI roadmap (red):** Belgium, Iceland, Hungary
- **Countries without a RI national roadmap (existing or in planning):** Israel

3. Purpose of national roadmapping

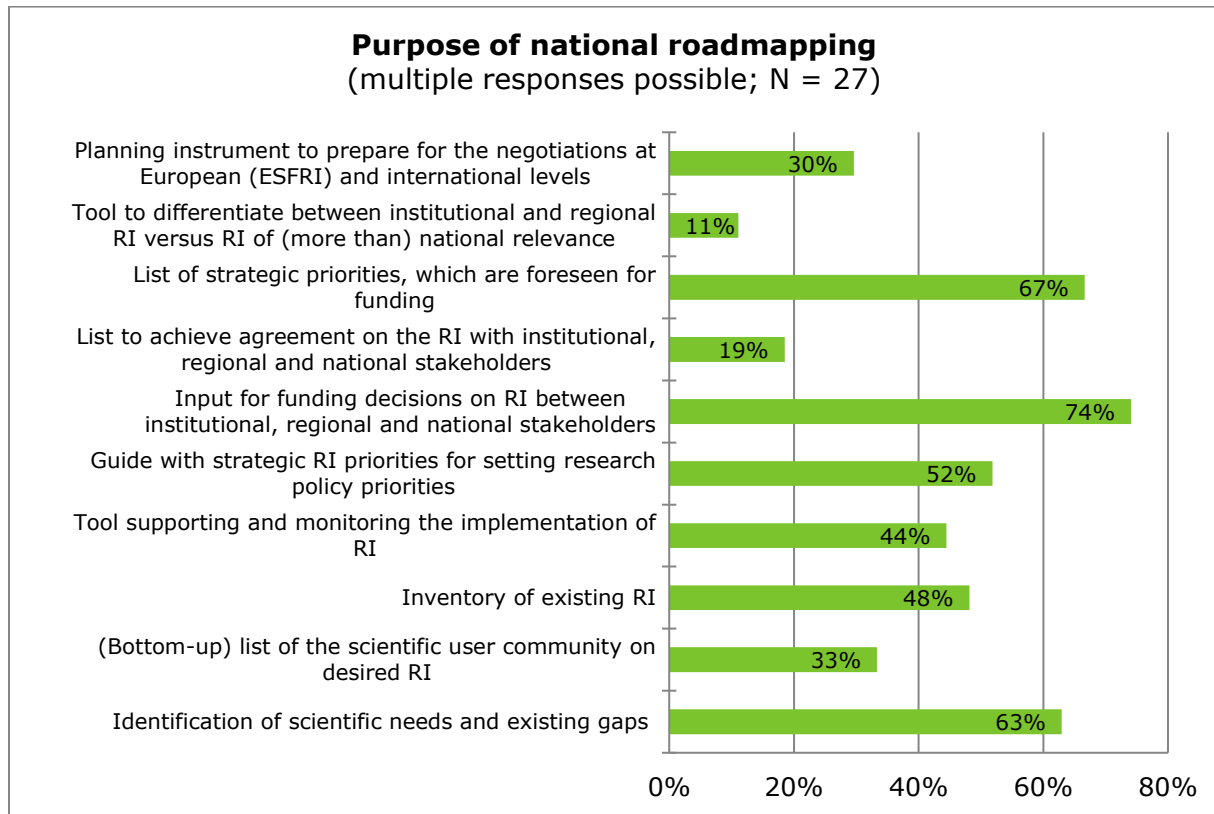


Figure 3: Purpose of the national RI roadmapping

- The question about the purpose of national RI roadmaps reveals a large variety among the European countries. Further purposes mentioned were: coordination instrument to respond to the needs related to IRs at national level; a list of strategic priorities.
- The top three purposes for national road maps are (1) having an input for funding decisions on RIs between stakeholders, (2) listing strategic priorities for foreseen funding and (3) identifying scientific needs and existing gaps.

4. RI evaluation/monitoring in place

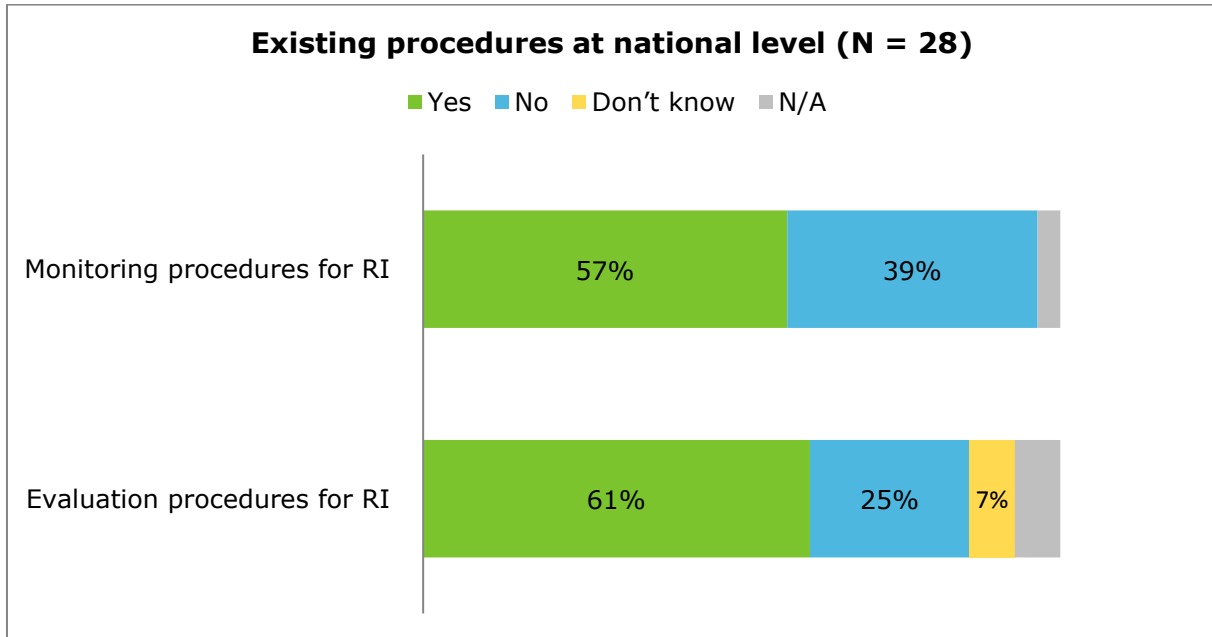


Figure 4: Overview of RI evaluation and monitoring in place

- The consultation revealed that a surprisingly large number of countries do not yet have any monitoring or evaluation procedures in place for RIs, which would be necessary to guarantee a transparent and sustainable funding of RIs.
- On the other hand, the consultation also revealed a considerable interest in learning more about evaluation procedures from other countries, so this particular figure might change in the future.

5. Topics of interest for learning

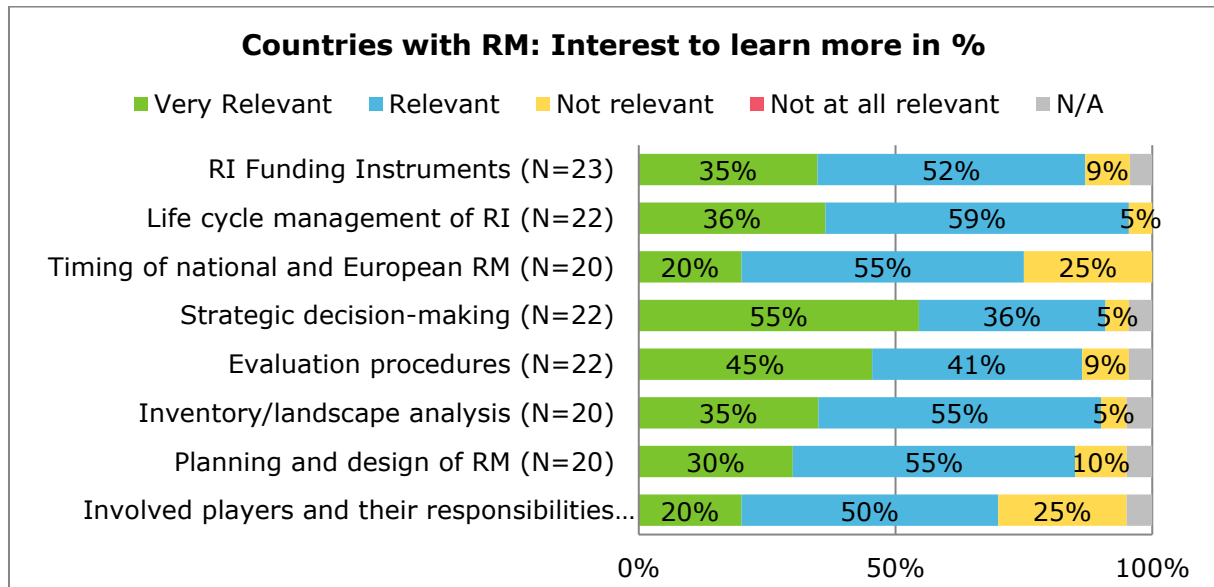


Figure 5: Topics of interest for learning of countries with a national RI roadmap

- The largest interest of countries with national RI roadmaps to learn from other lies within strategic decision making and evaluation procedures.
- Interestingly the timing of national and European RMs and the involved players and their responsibilities are of least interest. This might be explained with the given systemic conditions that cannot be changed.

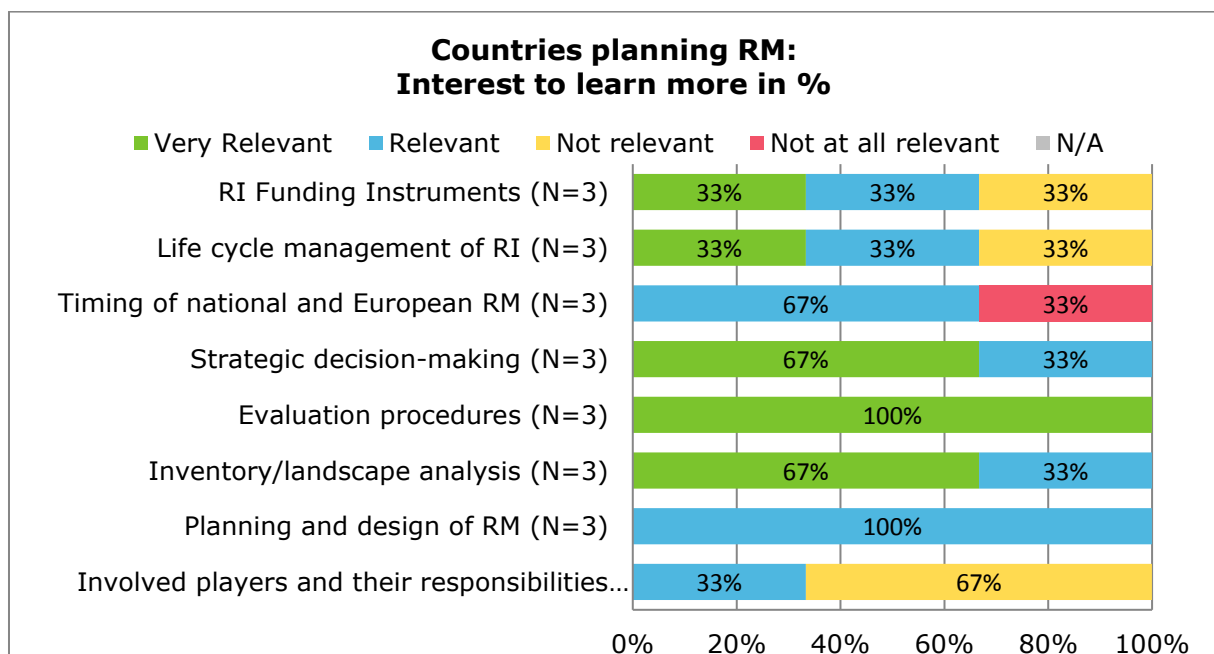


Figure 6: Topics of interest for learning of countries without a national RI roadmap

- For countries planning a national RI roadmap, a large interest to learn from others lies in evaluation procedures as well as the planning and design of roadmaps.
- The least interest is shown in learning more about the timing of national and European roadmaps and involved players, probably for the same reason as with the countries with national RI roadmaps (mentioned above).

6. Topics of interest for collaboration

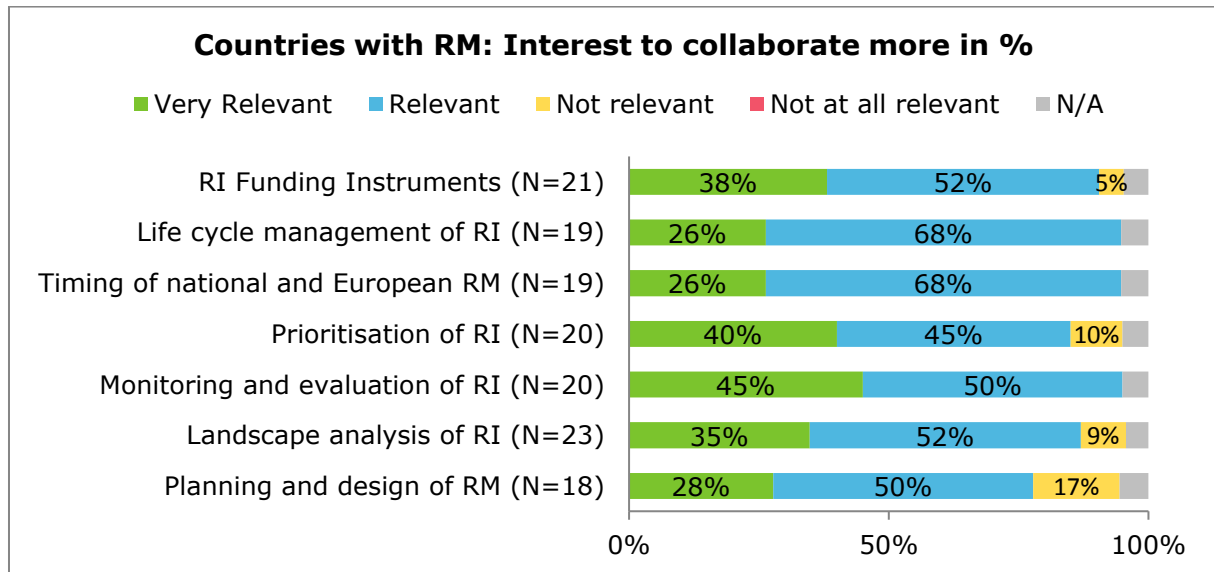


Figure 7: Topics of interest for collaboration of countries with a national RI roadmap

- Countries with national RI roadmaps share the largest interest in collaborating more with respect to (1) monitoring and evaluation procedures, (2) prioritisation of RIs and (3) funding instruments.
- The least interest exists in more collaboration regarding the planning and design of RI roadmaps, which seems reasonable due to the fact that they already have national RI roadmaps in place.

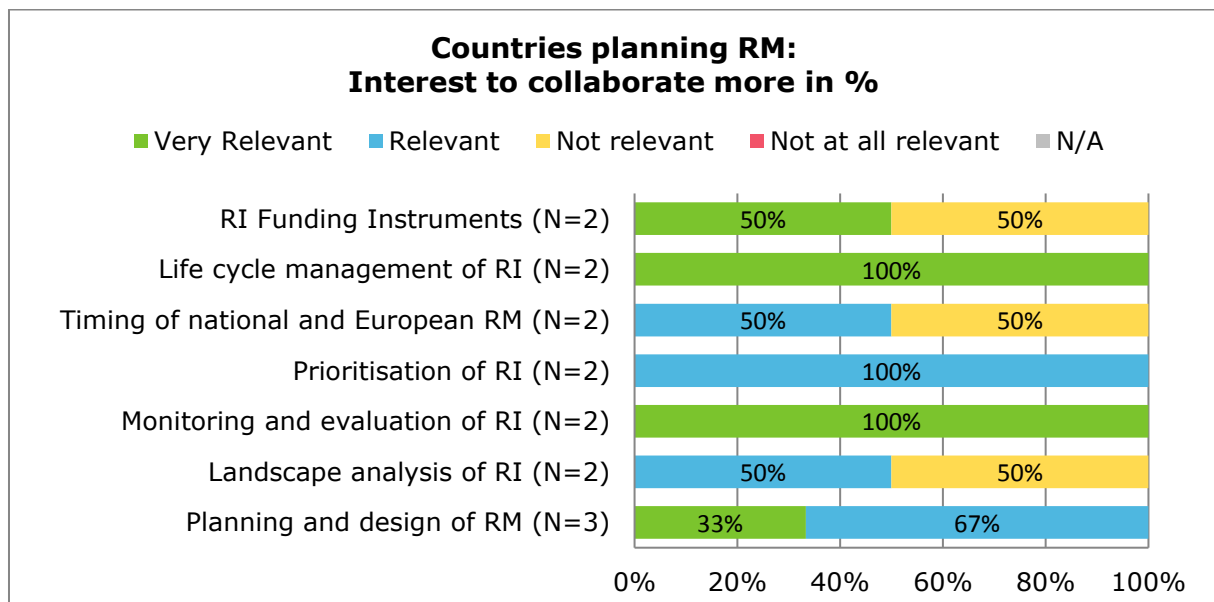


Figure 8: Topics of interest for collaboration of countries without a national RI roadmap

- Countries planning a national RI roadmap are mostly interested in collaborating more regarding (1) the life-cycle management of RI, (2) monitoring and evaluation procedures and (3) prioritisation of RIs.
- The least interest exists in more collaboration regarding (1) timing of national and European RMs and (2) the landscape analysis of RIs.