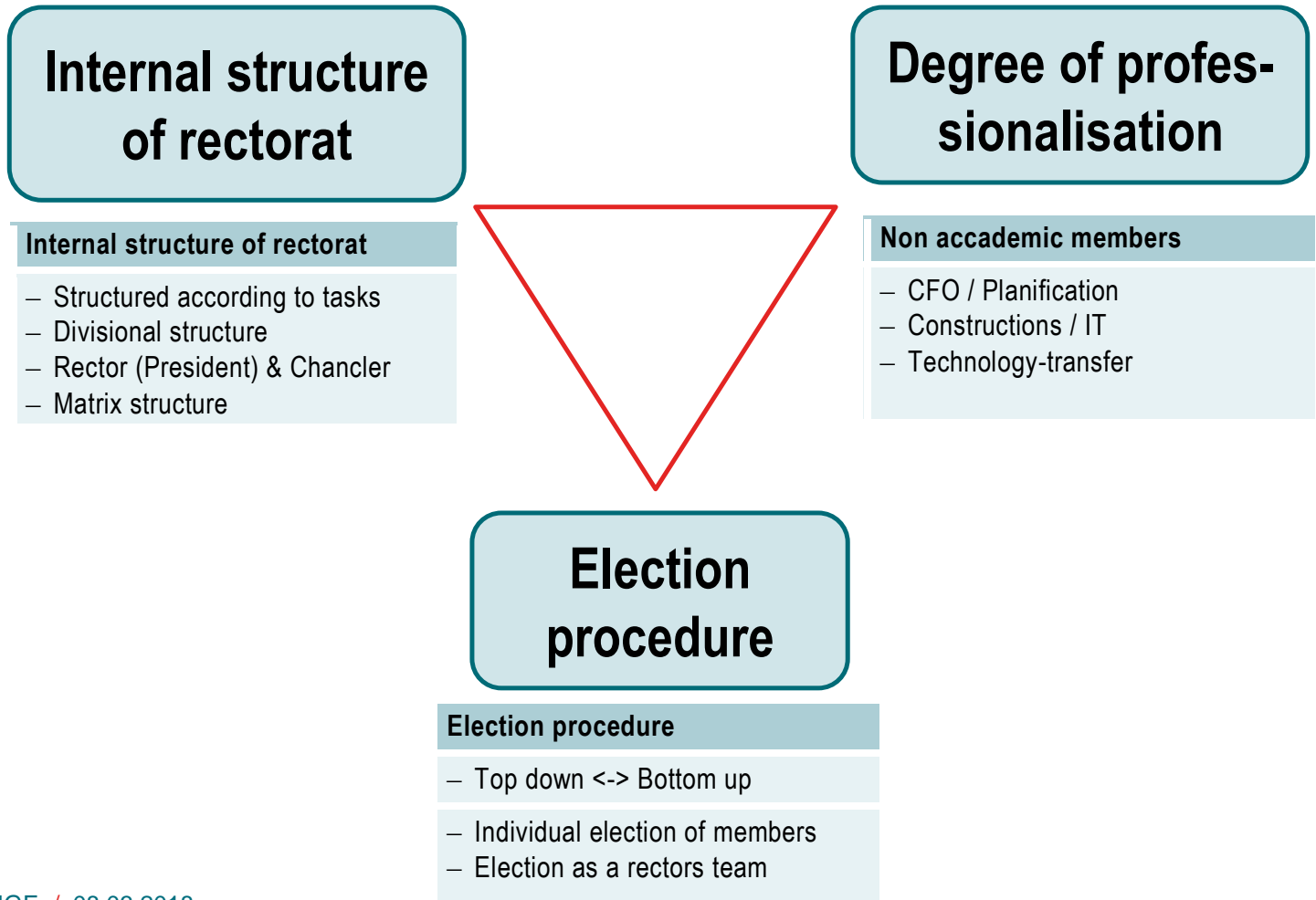


COST, Université de Genève, 08.03.2018

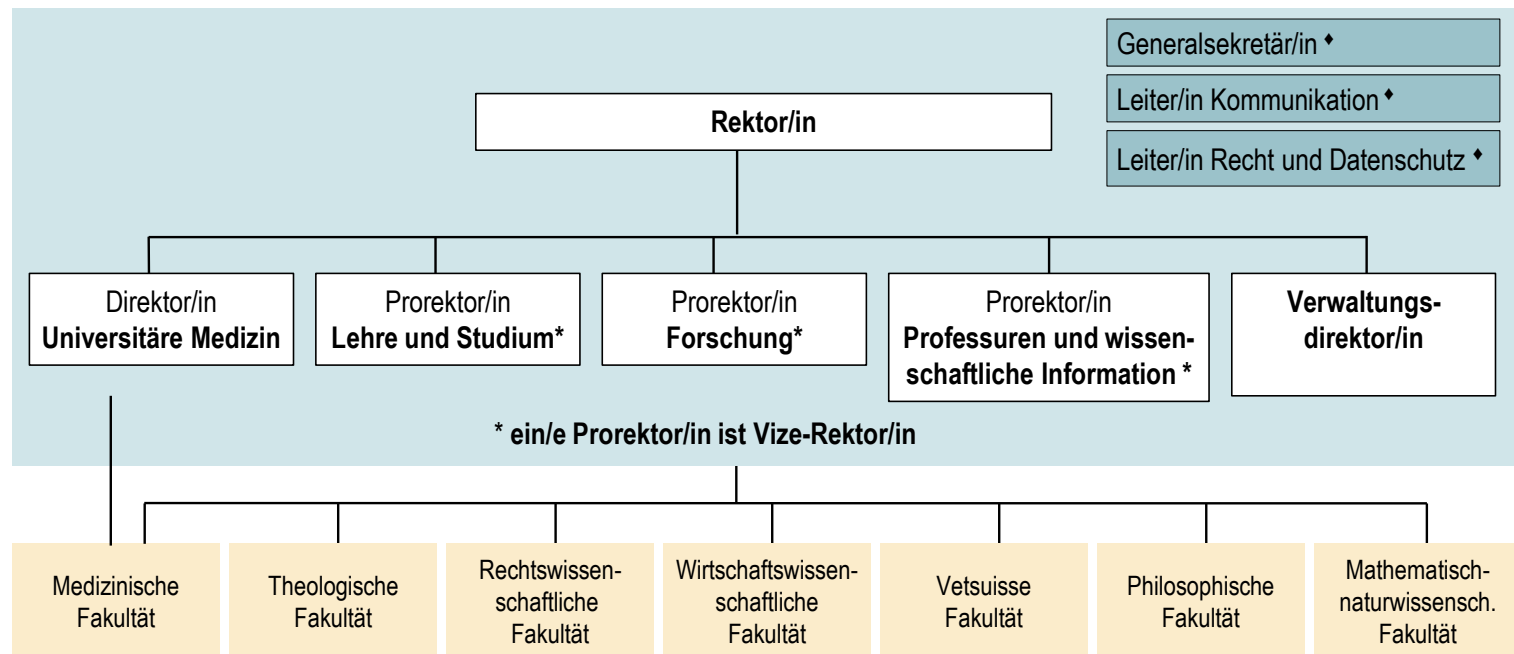
University Management Structures Key Aspects and Examples

Barbara Haering

University Management Structures: Key Aspects

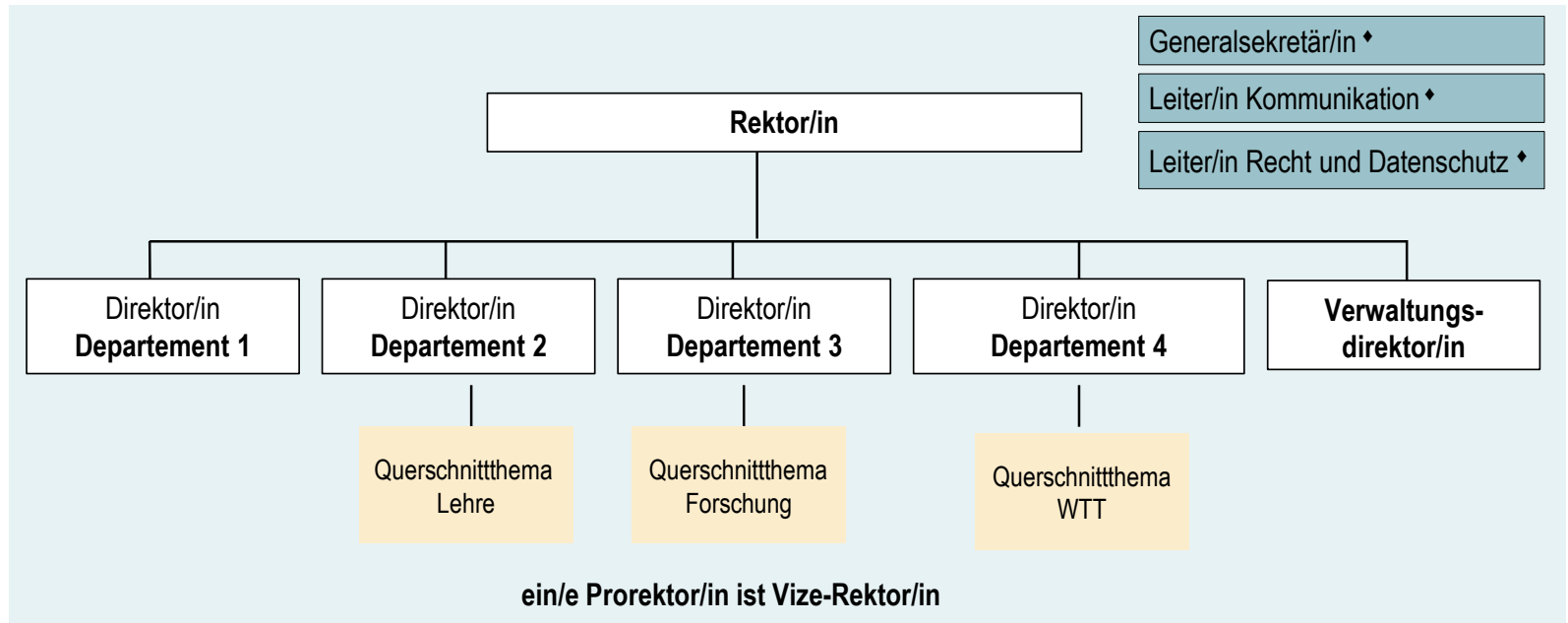


Traditional Structure in Swiss Universities



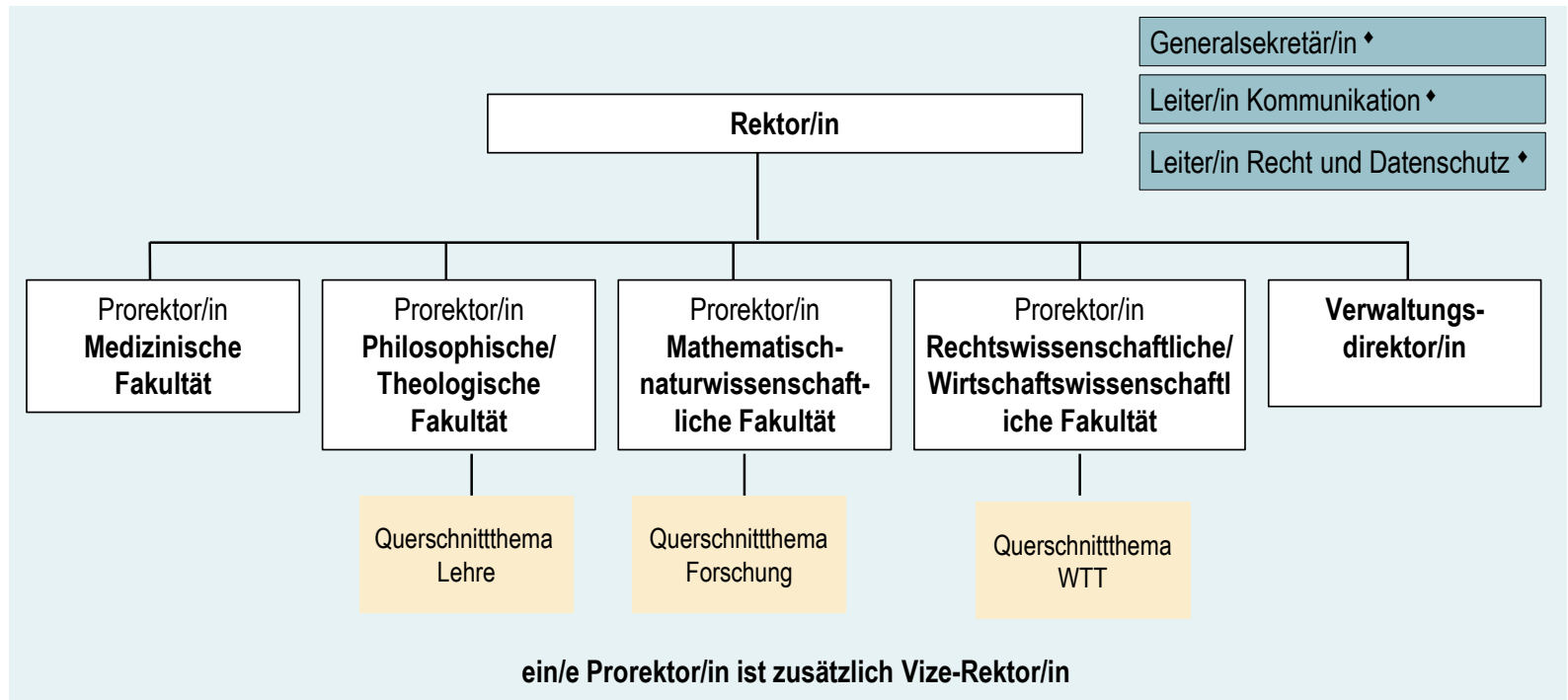
- Structure according to transversal tasks

Divisional Structure: HES



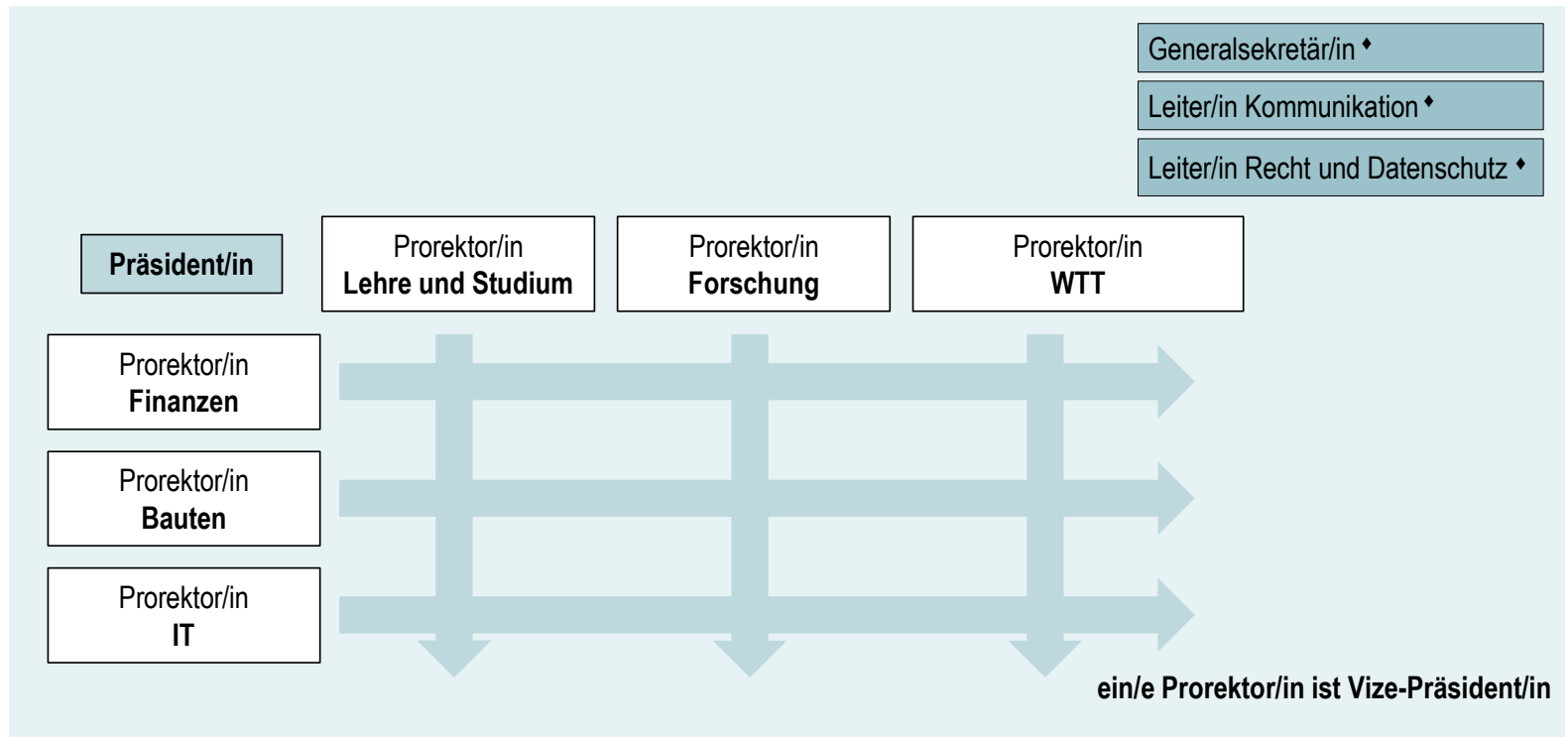
- Transversal tasks added recently

University Zurich during the last 12 years



- Mixture of traditional structure and divisional structure

Matrix Structure: EPFL



- High degree of professionals (non academic)